

TURRET TERMINAL BOARDS

Designers' Choice



- SAVE TOOLING • ECONOMICAL
- COMPLETE RANGE OF SIZES

Readi-Made Terminal Boards: Low cost, meets commercial and military specifications. Produced in large quantities, making it possible to eliminate tooling and setup charges usually applied to non-standard boards.

Terminals: Brass, ASTM-B16. Terminals are staked in all holes except end mounting holes.

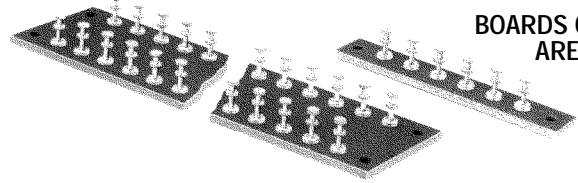
Plating: Hot Tin Dipped, MIL-T-10727. Recommended for longer shelf life and better solderability. Other plating can be furnished.

MATERIAL: Choice of either PBE or GEE

PBE: Paper base electrical, FED. LP-513, Type XP natural, Temp. 250 F max.

GEE: Glass epoxy, MIL-I-24768/27, Type G-10, Temp. 300 F max.

Modifications: Boards can be modified with other materials or terminals of your choice. Can be supplied with terminals staked in all holes or without terminals staked. Marking can be added. Prices on request.



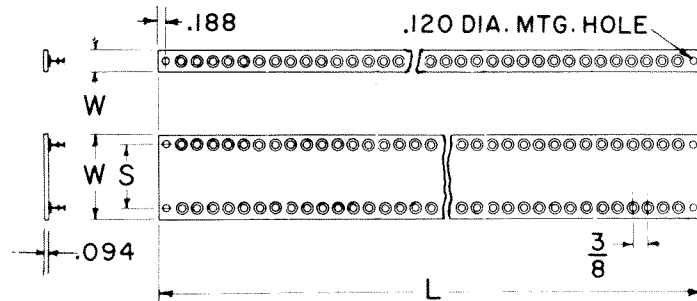
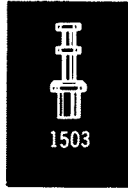
BOARDS ON THIS PAGE ARE NOT SCORED

TURRET TERMINAL BOARDS 3/8" SPACING

choice of sizes

Terminal: 1503-3 Brass Hot Tin Dipped.
Height above board 23/64"

MATERIAL: Choice of PBE or GEE 3/32" thick.



Terminals are staked in all holes except end mounting holes.

SEE BRACKET PAGE FOR SUITABLE MOUNTING HARDWARE.

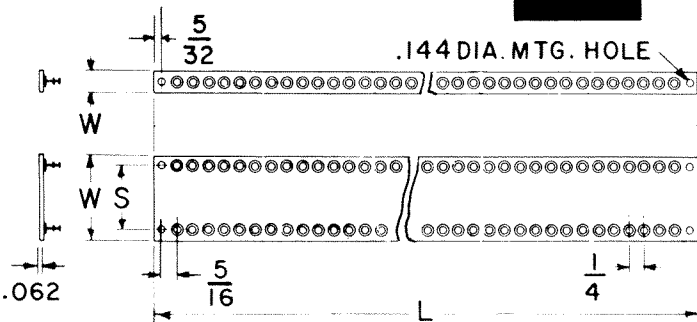
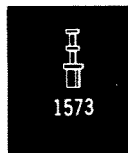
W	S	L	NO. OF TERMS EACH SIDE	MATERIAL PBE CAT. NO.	MATERIAL GEE CAT. NO.
1/2	Single Row	2 5/8	5	15101	15301
		5 1/4	12	15102	15302
		7 7/8	19	15103	15303
		10 1/2	26	15104	15304
1 3/16	3/4	13 1/8	33	15105	15305
		2 5/8	5	15106	15306
		5 1/4	12	15107	15307
		7 7/8	19	15108	15308
1 1/2	1	10 1/2	26	15109	15309
		13 1/8	33	15110	15310
		2 5/8	5	15111	15311
		5 1/4	12	15112	15312
2	1 1/2	7 7/8	19	15113	15313
		10 1/2	26	15114	15314
		13 1/8	33	15115	15315
		2 5/8	5	15116	15316
2 1/2	2	5 1/4	12	15117	15317
		7 7/8	19	15118	15318
		10 1/2	26	15119	15319
		13 1/8	33	15120	15320
3	2 1/2	2 5/8	5	15121	15321
		5 1/4	12	15122	15322
		7 7/8	19	15123	15323
		10 1/2	26	15124	15324
3	2 1/2	13 1/8	33	15125	15325
		2 5/8	5	15126	15326
		5 1/4	12	15127	15327
		7 7/8	19	15128	15328
3	2 1/2	10 1/2	26	15129	15329
		13 1/8	33	15130	15330

MINIATURE TURRET TERMINAL BOARDS 1/4" SPACING

choice of sizes

Terminal: 1573-2 Brass, Hot Tin Dipped.
Height above board 3/16"

MATERIAL: Choice of PBE or GEE 1/16" thick.



W	S	L	NO. OF TERMS EACH SIDE	MATERIAL PBE CAT. NO.	MATERIAL GEE CAT. NO.
5/16	Single Row	1 15/16	5	15431	15531
		3 11/16	12	15432	15532
		5 7/16	19	15433	15533
		7 3/16	26	15434	15534
7/8	9/16	8 15/16	33	15435	15535
		1 15/16	5	15436	15536
		3 11/16	12	15437	15537
		5 7/16	19	15438	15538
1 1/8	13/16	7 3/16	26	15439	15539
		8 15/16	33	15440	15540
		1 15/16	5	15441	15541
		3 11/16	12	15442	15542
1 1/8	13/16	5 7/16	19	15443	15543
		7 3/16	26	15444	15544
		8 15/16	33	15445	15545